



THOMAS BERRY PLACE CAMPAIGN

THE DREAM OF GOD • THE DREAM OF THE EARTH • THE DREAM OF ST. PAUL OF THE CROSS

CAMPAIGN OF THE PASSIONISTS
OF ST. PAUL OF THE CROSS PROVINCE

JAMAICA ✱ NEW YORK

WITH YOU.

From Our Provincial

The Dream of God
The Dream of the Earth
The Dream of St. Paul of the Cross



Dear Friends of The Passionists,

We Passionists celebrated our 300th year in 2020. We were founded by St. Paul of the Cross to be a community of priests, brothers and sisters who would be transformed by the *memory* of the Passion of Jesus. This *memory* demands that we stand today with those who continue to be ‘crucified’, including our common home, the earth.

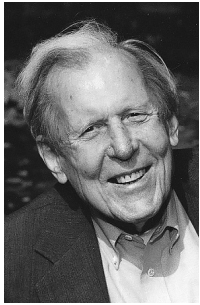
As Provincial, I, along with the Campaign Cabinet, have the joy of asking you to participate in our Campaign in support of *Thomas Berry Place*, the renovated Bishop Molloy Retreat House. This re-imagined retreat center will fulfill *St. Paul of the Cross’ Dream* that all people encounter the overwhelming love of the Divine through prayer and solitude. This re-imagined property will share the *Earth’s Dream* by installing solar energy, creating an on-site farm and instituting environmentally friendly practices. This re-imagined Place will make concrete - *God’s Dream* – one in which all will be welcome – beginning with those on the ‘margins’ and most easily forgotten.

I am asking you to share in this dream. You have been a part of the extraordinary past of Bishop Molloy and you can now be a partner in the creation of the future. Together we can re-engage our young as well as so many who have disconnected from our Church. We Passionists are *committed*; I ask you to stand with us. Please take the time to carefully review each page. After reading it, I ask that you prayerfully consider your own commitment to this project and be open to responding with generosity and gratitude.

With sincere thanks,

Fr. Jim O’Shea, CP
Provincial Superior of the St. Paul of the Cross Province

The Passionists Community Vision



Fr. Thomas Berry, CP

Case Statement

We are presented with an exciting opportunity to redevelop the *Bishop Molloy Retreat House* into *Thomas Berry Place* which will serve our communities for years to come. Following the completion of a thorough pre-campaign study, we believe The Passionists are in a privileged place to pursue the re-founding of our retreat house to create a new Passionist ministry in Jamaica, New York. This renovation, re-imagination and redevelopment project assimilates mission-focused partners and provides The Passionists the opportunity to renew our space and re-focus our mission in today’s challenged society.

The charisma of The Passionists has developed over many years and led us to embrace the “crucified of today”. Fr. Thomas Berry, CP further challenged the Passionists to see the earth itself as enduring a genuine form of *crucifixion* through the lack of care and disregard for our common home. The Passionists embrace the crucified God, a crucified people and a crucified earth.

Following is a detailed description of the project which allows The Passionists to fulfill every aspect of their refocused mission.

Thomas Berry Place

As we celebrate The Passionists’ 300th Anniversary, it is time to re-imagine and improve the Bishop Molloy Retreat House into a new Passionist Center that fulfills our re-focused mission, creates new partnerships, and offers new, *mission-based* utilization of the renovated physical spaces to meet the needs of our greater community. The vision of the new Thomas Berry Place will accomplish these goals by maintaining a Retreat House to provide spiritual direction for attendees while partnering with **ReconnectNYC**, and other **mission aligned communities** to serve the needs of the socially disconnected in society – the “crucified of today”.

Features of the Renewed and Renovated Passionist Center with a goal of opening spring 2022:

- A 50-room Retreat House and Guest House
- Traditional Weekend Retreats
- Air-conditioned Guest Rooms
- Renovated gathering, meeting and dining spaces
- ADA compliant and accessible front entrance
- On-site “Partners in Mission” as collaborators

- Expanded Community Outreach Programing
- Marginalized communities prioritized as guests
- Transition to Solar Energy
- Improved openness to the external gardens

Mission Aligned Partnerships

■ **RECONNECTNYC** Reconnect was founded by Fr. Jim O’Shea, CP in 2010 to create employment for socially disconnected young men ages 17-25 and has already served over 275 individuals. Their success has provided an outstanding 90% completion rate for the three-month employment program and over 85% continue to be employed in the City and beyond. The organization will lease the ground floor for its successful employment and training social enterprises including *Reconnect Café*, *Reconnect Bakery* and *Reconnect Graphics*.

Additionally, recognizing the need to take care of our land, *Retreat House Farm* will be established on the grounds to grow fresh produce which will feed members and guests of the house, as well as those in the community with food insecurity. An indoor hydroponics farm will also grow fresh produce year-round to serve the house and surrounding community.

■ **MISSION ALIGNED COMMUNITIES IN RESIDENCE** *Thomas Berry Place* will invite other mission-driven groups to share space on the second floor to enrich the community and ministry, as well as to share in the sustainability of the center.

■ **PROVINCIAL ADMINISTRATIVE OFFICES** The administrative offices of the Passionists of the Province of St. Paul of the Cross will lease space at the Center and collaborate in the mission.

OUTLINED PROJECT NEEDS AND COSTS:

Construction costs for Thomas Berry Place includes the following: construction and municipal fees, site preparation/improvements and contingency, architectural fees, testing/inspections, furnishings, and equipment.

Total Construction Costs: \$4,225,863

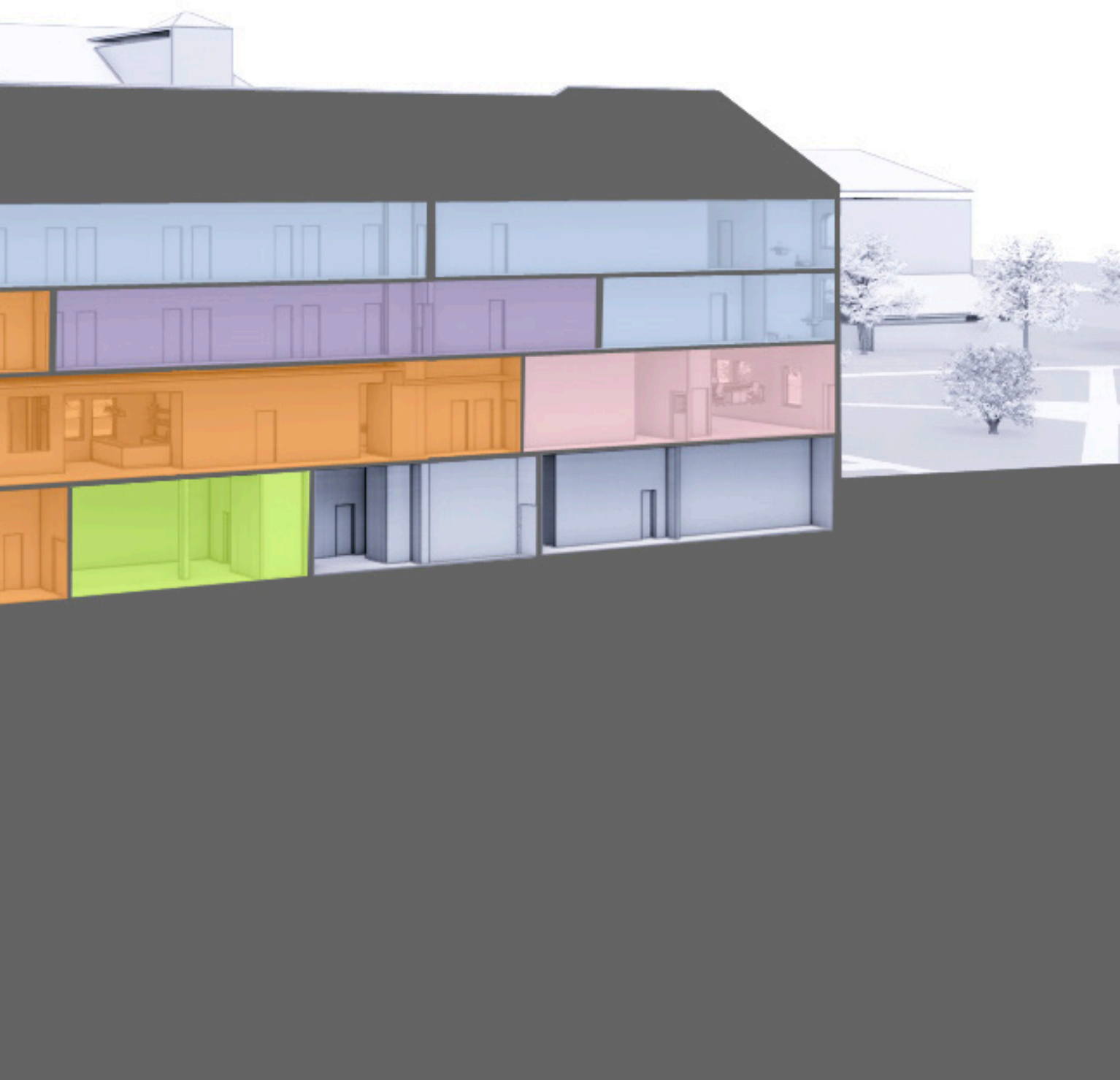
Non-Construction & Hydroponic Farm Costs: \$509,478

Total Project Costs: \$4,735,341

**THE PASSIONIST OF
ST. PAUL OF THE CROSS PROVINCE**

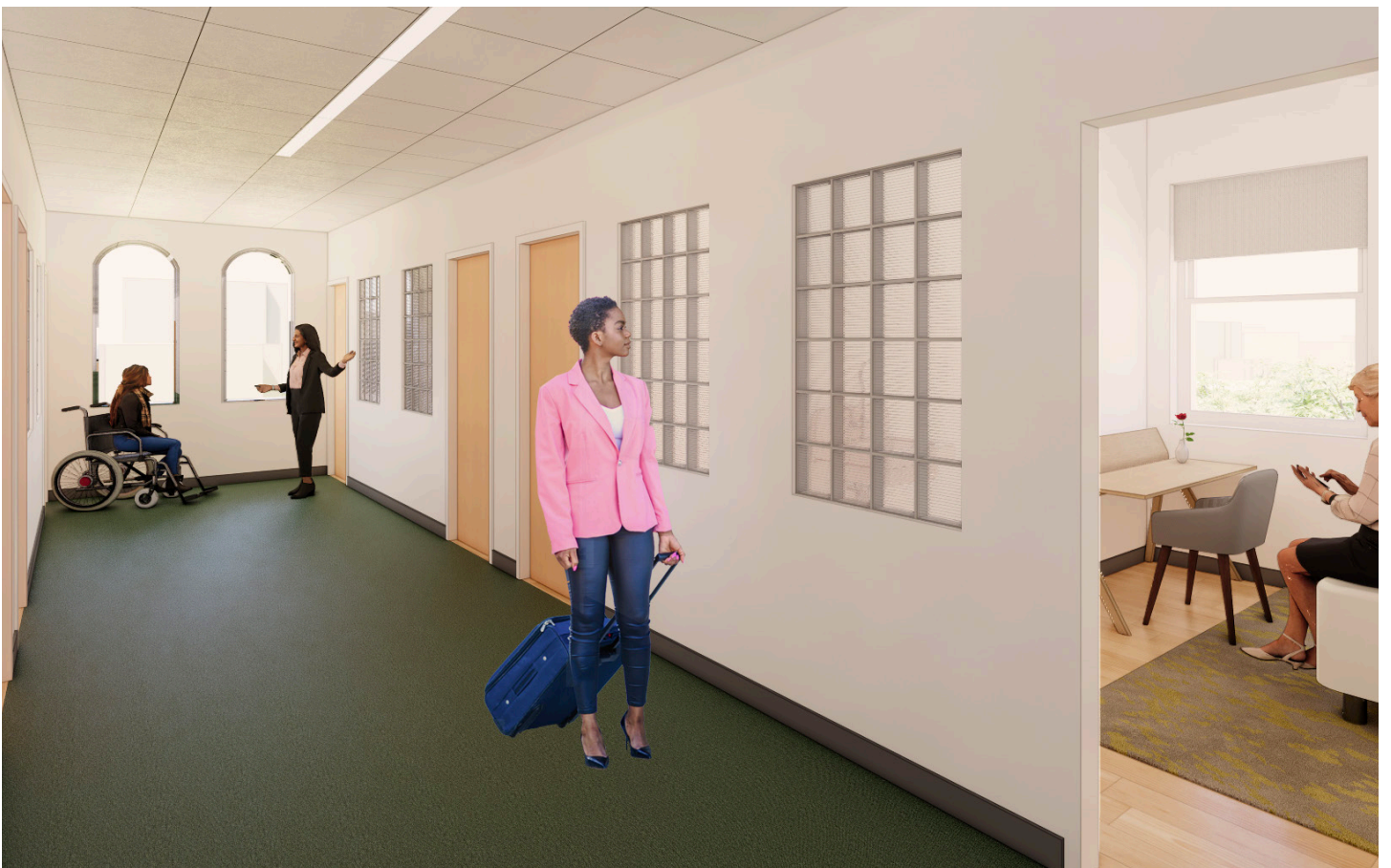
-  Lobby
-  Community Hall
-  Kitchen
-  Retreat Center
-  Provincial Government
-  Mission Partners
-  Mission Partners
-  Reconnect







VIEW OF NEW ACCESSIBLE ENTRANCE



GUEST HOUSE



LOBBY



MEETING ROOM



COMMUNITY HALL



COMMUNITY HALL



RECONNECT PRESS ROOM



RECONNECT RESOURCE ROOM



RETREAT HOUSE HYDROPONICS FARM



RETREAT HOUSE FARM



OPPORTUNITIES & RECOGNITION

In an effort to recognize the families and individuals who make a sacrificial gift to our Thomas Berry Place Campaign effort, we will create a Gift Recognition Plaque which will be located within the retreat house. The participants to this campaign will have their desired inscription listed in alphabetical order. We ask that each donor considers challenging themselves to participate within one of the following levels:

Foundation Gifts

*For families or individuals who wish to make a gift to the campaign of \$25,000 or more, their names would be gratefully displayed as **Founders of our Campaign.***

Patron Gifts

*For those families who wish to make a gift to the campaign of \$15,000 - \$24,999, their names would be gratefully displayed as **Patrons of our Campaign.***

Benefactor Gifts

*For those families or individuals who wish to make a gift to the campaign of \$10,000 - \$14,999, their names would be gratefully displayed as **Benefactors of our Campaign.***

Donor Gifts

*For those families or individuals who wish to make a gift to the campaign of \$3,000 - \$9,999, their names would be gratefully displayed as **Friends of our Campaign.***

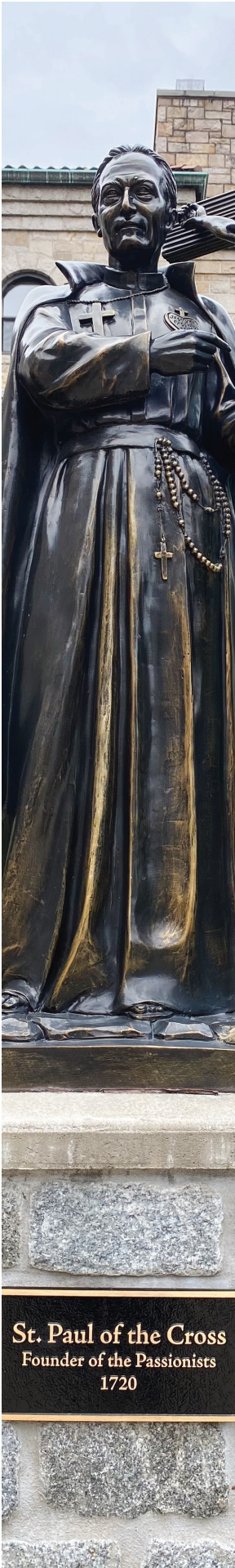
All payments can be made over a three-year period.

Giving Plans

WE ASK THAT YOU CONSIDER MAKING A THREE-YEAR SACRIFICIAL PLEDGE TO THIS CAMPAIGN.

This pledge would be in addition to your regular annual donations. For the gift to the campaign, you may choose monthly, quarterly, semi-annual or annual payments to fulfill your pledge. We are asking all of our donors and supporters to consider a minimum pledge over the next 36 months of \$3,000. If necessary, arrangements can be made for payment over a five-year period. While we welcome gifts at levels not listed below, let this be your guide in determining your support.

<i>Total Pledge</i>	10% down	3 YEAR PLEDGE CHART			
		Annual -3-	Semi-Annual -6-	Quarterly -12-	Monthly -36-
\$250,000	\$25,000	\$75,000	\$37,500	\$18,750	\$6,250
\$100,000	\$10,000	\$30,000	\$15,000	\$7,500	\$2,500
\$50,000	\$5,000	\$15,000	\$7,500	\$3,750	\$1,250
\$25,000	\$2,500	\$7,500	\$3,750	\$1,875	\$625
\$15,000	\$1,500	\$4,500	\$2,250	\$1,125	\$375
\$10,000	\$1,000	\$3,000	\$1,500	\$750	\$250
\$5,000	\$500	\$1,500	\$750	\$375	\$125
\$3,000	\$300	\$900	\$450	\$225	\$75
\$2,500	\$250	\$750	\$375	\$187.50	\$62.50
\$2,000	\$200	\$600	\$300	\$150	\$50



Ways to Give

Cash

Those who wish to make an outright gift of cash, or fulfill their pledge through cash payments, should make their check payable to The Passionists. Credit cards are also acceptable. Such gifts are tax deductible to the full extent allowed by law.

Pledges

Cash pledges shall be counted toward the campaign goal at the full, face value of the pledge when properly documented by a signed pledge card or written *letter of intent*. To be counted in full toward the campaign goal, the pledge must be payable in full within a period of up to three years from the date of the pledge, five-year pledges will be considered, if necessary.

Securities

Appreciated securities offer donors an income tax deduction for a charitable gift and donors avoid capital gains tax that will be incurred through a sale. Please consult your tax accountant/expert for advice.

Matching Gifts

You may be able to **double** the impact of your gift. Many employers have matching gift programs and will match any charitable contributions made by employees, retirees, and employee spouses. Please see your Human Resource Department to check your company's guidelines to see if your campaign gift qualifies.

In addition to a pledge, you might consider these other ways to give:

Bequests

Individuals may make a gift in a specific amount or a percentage of his or her estate to support The Passionists. Please consult your financial adviser for advice.

Life Insurance

The Passionists may be named as the owner and beneficiary of a new policy or ownership of an existing policy may be transferred to The Passionists.

Real Estate

Real estate allows donors to both claim an income tax deduction for the value of the gift and avoid paying a capital gains tax on the appreciation of the property. Please consult your financial adviser for advice.

Life Income Gifts

One can make a gift of cash, securities, or other assets to The Passionists and receive both incomes for life and a charitable tax deduction in return. A variety of trusts and annuities facilitate such gifts. Upon the donor's or designated beneficiary's death, or at another prearranged time, the trust terminates and the assets are transferred to The Passionists. Please consult your financial adviser for advice.

St. Paul of the Cross
Founder of the Passionists
1720

FREQUENTLY ASKED QUESTIONS

How was the project to build a new Passionist Center & Retreat House determined?

The Thomas Berry Place project was determined by the provincial leadership based on the current and future needs of The Passionists. The project was then tested through personal interviews and an e-survey of the pre-campaign study conducted by Ruotolo Associates. Building cost estimates were provided by our general contractor, Fazio Construction, which determined our goal of \$4.7 million.

When will construction begin?

The duration of the capital campaign will be approximately twelve months, which will provide sufficient time for donors to prayerfully consider their pledge amount. A pledge redemption period of 36 months will follow the capital campaign. Construction will begin within the first 12 months of the 36-month time period.

How much am I expected to give?

Your pledge is a *very personal* decision. This campaign is a unique opportunity for our community to continue as a vibrant place to worship and serve those in need. Ultimately, we ask that you consider your sacrificial gift in terms of your overall stewardship to our community, and what this project means to you, your family, and the future of The Passionists' good work. We have been blessed by the sacrifices of those who came before us.

How long will I have to meet my pledge?

Making a pledge as opposed to a one-time gift allows you to make a larger contribution to this campaign over a designated period of time. We are asking donors to fulfill their pledges over a three-year period.

Is my gift tax deductible?

Yes. The amount contributed is deductible to the full extent provided by the law of the United States.

I already give to The Passionists. Why should I support the campaign?

The campaign supports a very *special* Retreat House re-focus and renovation project and is separate from regular donations. The Passionists are grateful for all donations they receive throughout the year. Your generous contributions are needed for regular operating expenses and are not designated for capital improvements or repairs. Ideally, the Orders' charitable income should be at least equal to its operating expenses (utilities, supplies, services, employee salary and benefits, insurance, etc.). Capital projects are considered extraordinary expenses that need additional funding.

How can I make my payments?

We have developed a three-year pledge chart to help you identify a pledge level that you can reach. You will see that you can choose to fulfill your pledge in a number of ways. The Development Office will send out reminders before each payment is due that will include a balance.

Will my gift be recognized?

Unless requested otherwise, all contributors to the campaign will be included in an alphabetical listing of donors in our newsletter, website, and donor plaque. Other future means may be considered as well.

What happens if I am unable to complete my pledge?

A pledge to the campaign is a faith promise; it is not legally binding. The Passionists are dependent on the generosity and ability of its donors and community friends to complete this project. While we pray that you will not experience any financial challenges, should your situation change, we will work with you to accommodate any unforeseen personal situations.

OUR CAMPAIGN PRAYER

God our Creator
for over 14 billion years you have
guided the emergence of our universe as the
first revelation of your wisdom.

In the fullness of time,
Jesus taught us to love and
was crucified in its fulfillment.
Now in, this, our moment in time,
we ask you for wise and creative love as we
undertake to renew our mission by
dreaming - with our brother,
St. Paul of the Cross,
with our precious mother earth and
with You, Our God
who live and reign
forever and ever.

AMEN.

